

Technical parameters

Item	Parameter
Chassis model (imported)	VOLVO FM500
Transmission	Manual and automatic integrated
Maximum power (kw)	368
Outline of the whole vehicle (m)	11.975×2.55×3.86
PTO / power-take-off	Power takeoff of broken shaft
Working mode of water pump boom	Linkage
Number of boom sections	3 (flexible)
Chassis model (imported)	VOLVO FM500
Working scope of boom	Boom I: 87° Boom II: 235° Boom III: -30—60°
Slewing angle	360° infinite rotation
Working height (m)	21
Working amplitude (m)	Forward and backward 15, left and right 11
Leveling mode	Automatic leveling
Water pump model	HALE 8FGR (imported)
Water pump flow (L/s)	167 (imported)
Model of fire control gun	akron3480+5178
Flow of fire control gun (L/s)	100
Jetting range (m)	≥ 85
Foam system	Imported fully automatic foam system
Mixed proportion	0.1-10%
Control mode	Local control + line control + remote control
Number of passengers (person)	≥ 6
Tank body	18+2 (able to be customized)
Material of tank body	304 stainless steel
Flow of mixed fluid	160
Emergency power	Gasoline engine
Material of vehicle body	Full-aluminum welding



JP21 21M Large Tank Water Tower



电话 Tel 0731-84031888
传真 Fax 0731-84031999

售后服务热线 Service 4008 87 8318
咨询投诉电话 Consulting 4008 87 9318



SANY SYM5430JXFJP21
SANY Emergency Rescue Equipment



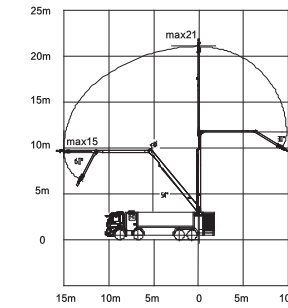
- It is mainly used for fire rescue of low-rise buildings of urban and mineral enterprises and buildings such as petrochemical enterprise, oil tank and warehouse.
- It is a kind of multi-functional fire truck integrating main fire fighting vehicle, water tank fire truck, foam fire truck and elevated jetting fire truck functions.

Large scope

The unique positive and negative three-folded boom, with working height reaching 21m, working amplitude enhanced by 30% compared with routine boom.



Boom Reliability Test



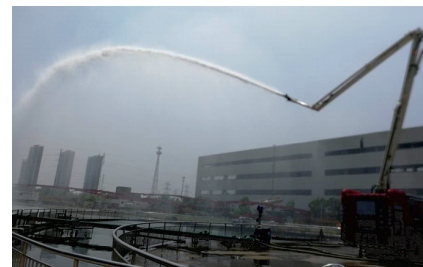
Working scope of boom

Large flow

The maximum jetting flow of boom gun is 100L/s, and the maximum firing range of fire control gun can be longer than 85m.



Waterway performance detection



Jetting distance detection



Working stability performance detection

Large carrying capability

- The whole vehicle can carry 20t liquid, and the whole tank body adopts top-quality stainless steel, with strong anti-corrosion capability.
- It is provided with independent passenger compartment, with the number of passengers able to reach 2+4+3 (optional).



Picture of passenger compartment (internal)

Linkage operation

We can adjust the posture of boom and water gun at will, "pumping water while moving boom", so as to enhance the efficiency of fire extinguishment.



Cooperation

The wireless automatic grouping cooperation technology will match water supply and water receiving flow automatically, so as to realize cooperation with large-span fire truck, provide the most stable water source supply and reduce waste of a great amount of water sources, without artificial interference.

