

**SANY**<sup>®</sup>

# STG210C-8 MOTOR GRADER

## STG210C-8 液力式平地机

RELIABLE WITH HEAVY LOAD, COMFORTABLE WITH HIGH EFFICIENCY

**重载可靠**

**安全舒适**

### RELIABLE, EFFICIENT AND COMFORTABLE

- ◆ **Efficient and energy-saving:** heavy-load engine and VHP technology.
- ◆ **Reliable with heavy load:** reliable rear axle and work implements of rotary bearing structure.
- ◆ **Humanized design:** safe and comfortable ride and operation experience.
- ◆ **Comfortable and convenient:** easy maintenance and low operation cost.



#### 高效节能

- ◆ 重载发动机及变功率技术

#### 人性化设计

- ◆ 安全舒适的驾乘体验

#### 重载可靠

- ◆ 回转支承结构作业装置及后桥

#### 使用便捷

- ◆ 维修保养方便，使用成本低



# TECHNICAL PARAMETER

## 技术参数

型号 Model	STG210C-8	
动力系统参数 Power System Spec.	供应商 Supplier	WEICHAI
	排放等级 Emission	CHINA III
	型号 Model	WP6G210E330
	额定功率 (kW) Rated Power	154
	额定转速 (rpm) Rated Rotation Speed	2200
	峰值扭矩 (Nm) Peak Torque	900
尺寸参数 Dimensions*	标准型 (无配重) : 长 × 宽 × 高 (mm) Standard (without counterweight): L*W*H"	9080×2740×3310
	前后桥距 (mm) Front and Rear Axle Base	6082
	中后轮轴距 (mm) Middle and Rear Wheel Base	1538
	后桥离地高度 (mm) Clearance from Rear Axle to Ground	410
质量载荷参数 Load Spec.	标准型 (无配重) (kg) Standard (without counterweight)	16200
作业装置参数 Operating Device Spec.	铲刀长 (mm) Length of Blade	3660mm(12ft)(standard)
	铲刀高度 (mm) Height of Blade	620
	铲刀倾斜角度 (°) Tilt Angle*	±90
	铲刀回转角度 (°) Turning Angle	360
	铲刀最大提升高度 (mm) Max. Lift above Ground	450
	铲刀最大铲土深度 (mm) Max. Depth of Cut	630
运动参数 Running Spec.	铲刀切削范围 (°) Blade Tip Range"	25~75
	挡位数 Gears	前 6 后 3 6 Forward and 3 Reverse
	前进挡车速 (km/h) Forward Speed	6/10/13/21/27/42
	后退挡车速 (km/h) Reverse Speed	6/13/27
	前轮转向角度 (°) Steering Angle of Front Wheel	±45
	前轮倾斜角度 (°) Tilt Angle of Front Wheel	±17
	铰接转向角度 (°) Articulated Steering Angle	±27
	前桥摆动角度 (°) Oscillation Angle of Front Axle	±16
	最小转弯半径 (m) Min. Turning Radius	7.3 m
	轮胎型号 Model of tire	17.5-25(12PR)(standard)
油箱容积 Tank Capacity	液压油箱最大容积 (L) Max. capacity of hydraulic oil tank"	140
	燃油箱最大容积 (L) Max. capacity of fuel tank	350

# STANDARD & OPTIONAL CONFIGURATIONS

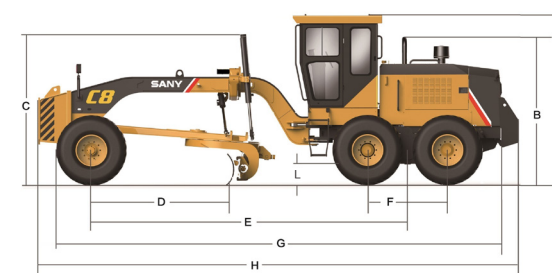
## 技术参数

型号 Model	标配 Standard	选配 Optional
STG210C-8 (Weichai)	12ft 铲刀 12ft Moldboard	14ft 铲刀 14ft Moldboard
	过载保护结构 Overload Protection Circle Drive	/
	空调 HVAC	/
	/	环境温度为 -20°C, 需加装进气预热系统 Intake Preheater (meet -20°C )
	/	倒车影像 Rear Camera
	/	前推土板 Front Dozer Blade
	/	五齿后松土器 Five-tooth Rear Ripper

# DIMENSIONS

## 尺寸参数

尺寸代号 Size No.	名称 Name	STG210C-8
A	驾驶室顶部高度 (mm) Height to top of cab	3310
B	排气管高度 (mm) Height to exhaust pipe	2885
C	铲刀提升油缸顶部高度 (mm) Height to top of blade lift cylinder	2900
D	前桥至铲刀壁间距离 (mm) Front axle to blade	2500
E	前后桥轴距 (mm) Wheel base (between front and rear axles)	6082
F	中后轮轴距 (mm) Wheel base (between middle and rear wheels)	1538
G	前轮至机器后端长度 (mm) Front tire to rear of machine	8580
H	全长 (mm) 标配 / 前推后松 Overall length (with front push plate and rear scarifier)	9080/11100
I	后轮距 (mm) 精大 / 美驰 Width (tire center lines)	2280/2170
J	前轮外侧宽度 (mm) Width (outside front tires)	2580
K	后轮外侧宽度 (mm) Width (outside rear tires)	2740(1) 2620(2)
L	后桥离地间隙 (mm) Ground clearance at rear axle	410



**SANY HEAVY INDUSTRY CO., LTD.**

SANY Industry Town, Changsha Economic and Technological Development Zone,  
Hunan Province, China  
Service Line: +86 4006 098 318 E-mail: crd@sany.com.cn

**SANY**<sup>®</sup>  
QUALITY CHANGES THE WORLD.