

## MAIN CONFIGURATION

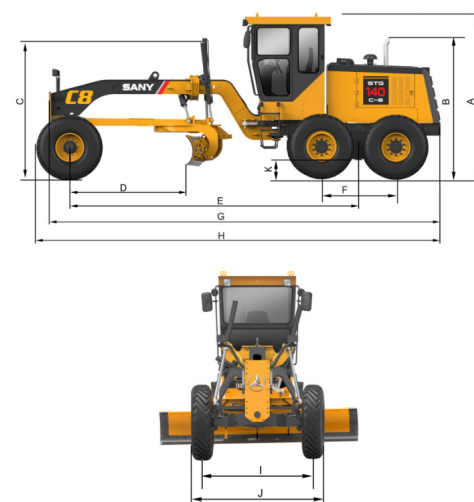
Name	Model	Brand
Engine	6BTA5.9-C150	DCEC Cummins
Transmission	YD13	HANGCHI
Drive axle	GHA140	XUZHOU JINGDA

## MAIN SPECIFICATION

	Model	STG140C-8
Power System Spec.	Supplier	Dongfeng Cummins
	Emission	EU stage II
	Model	6BTA5.9-C150
	Rated power (kW)	112
	Rated rotation speed (rpm)	2200
	Peak torque (Nm)	655
	The Number of Cylinder	6
Load Spec.	Displacement (L)	5.9
	Standard (with rear counterweight) (kg)	13300
Operating Device Spec.	Max.(with ripper) (kg)	14700
	Length of blade (mm)	3660(12ft)
	Height of blade (mm)	620
	Tilt angle (° )	±90
	Turning angle (° )	360
	Max. lift above ground (mm)	420
	Max. depth of cut (mm)	630
Running Spec.	Blade tip range (° )	25-75
	Gears	6 forward and 3 reverse
	Forward speed (km/h)	5/8/12/19/28/41
	Reverse speed (km/h)	5/12/28
	Steering angle of front wheel (° )	±45
	Tilt angle of front wheel (° )	±17
	Articulated steering angle (° )	±25
Tank Capacity	Oscillation angle of front axle (° )	±16
	Min. turning radius (m)	7.2
	Model of tire	13.00-24TG 16PR
	Max. capacity of hydraulic oil tank	100
	Max. capacity of fuel tank	330

## DIMENSIONS

Size	Item	Value
A	Height to cab (mm)	3356
B	Height to exhaust stack (mm)	2821
C	Height to top of cylinders (mm)	2724
D	Front axle to moldboard (mm)	2500
E	Front axle to mid tandem (mm)	5950
F	Tandem Axles(mm)	1538
G	Front tire to rear of machine (mm)	8159
H	Overall length (standard)(mm)	8360
I	Width of outside front tires (mm)	2354
J	Width of rear tires (mm)	2460
K	Ground clearance (mm)	410



QUALITY CHANGES THE WORLD



# STG140C-8 MOTOR GRADER

- Great maneuverable:** Relative small size and the turning radius guarantee the outstanding maneuverability.
- Adaptable and serviceable:** Euro II engine with great adaptability for harsh environment and excellent serviceability.
- Reliable and durable:** Maintenance-free rear axle and work implement of rotary bearing structure.
- Safe and comfortable:** ROPS/FOPS cab and ergonomics console.

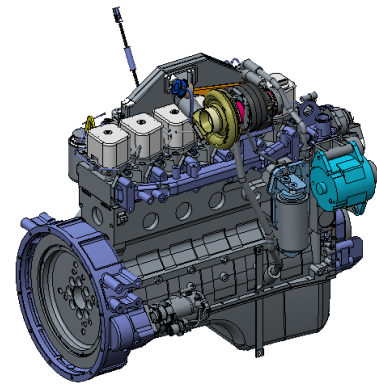


SANY Industry Town, Changsha Economic and Technological Development Zone,  
Hunan Province, China  
Service Line: +86 4006 098 318  
E-mail: crd@sany.com.cn

[www.sany.com.cn](http://www.sany.com.cn)

# SANY





**POWERFUL AND RELIABLE POWER SYSTEM**

•6BTA5.9 engine made by DCEC (Dongfeng Cummins) which meets the requirement of EU STAGE II has high adaptability of oil quality.  
 •Effective single layer radiator can keep the system in good status even if the environment temperature is over 50°C .



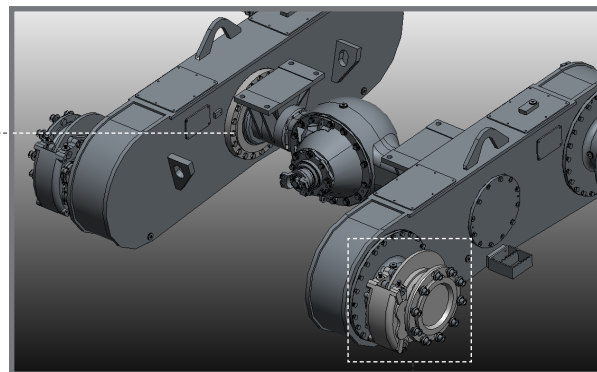
**HANGCHI YD13 ADVANCED TRANSMISSION**

•Advanced circulation of the torque converter improves the transmission efficiency extremely, which achieves 30% traction and 20% speed increasing.



**DRIVE AXLE WITH SLEWING BEARING STRUCTURE**

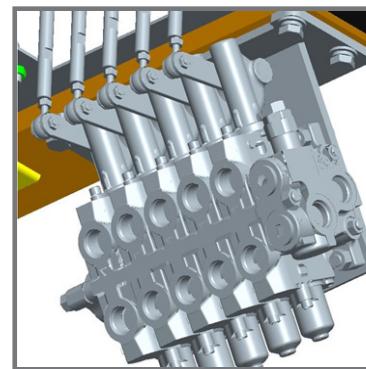
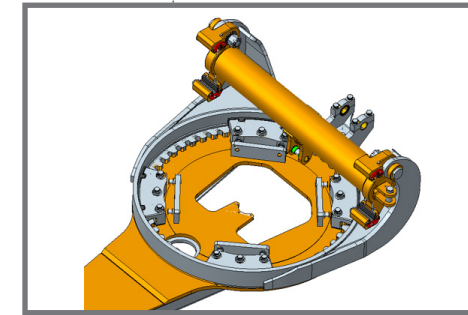
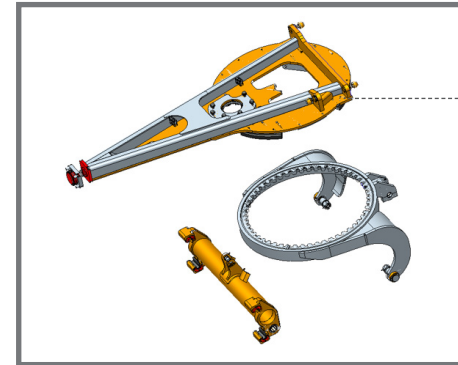
•Slewing bearing instead of traditional copper bushing is utilized for oscillation of the tandem, which has over 10000h service life. Caliper type service brake can achieve shorter brake distance, higher safety and easier maintenance.



CALIPER TYPE SERVICE BRAKE

**NEW REINFORCED WORK IMPLEMENT**

•Open Supporting plate structure gives a easy access to clean the inside teeth. Strong circle and integrated moldboard support can meet all kinds of heavy load conditions. Heat-treated circle teeth gives long service life over 5000h.

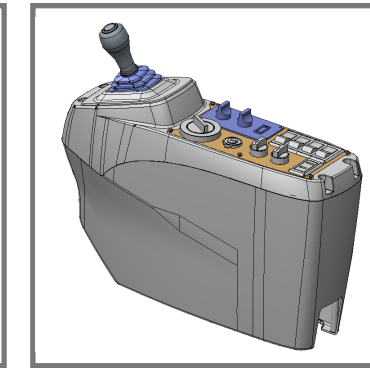
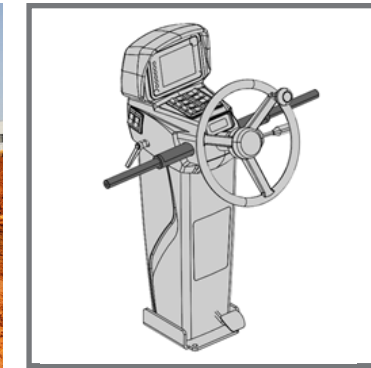


**LOAD SENSING HYDRAULIC SYSTEM**

•Responsive hydraulic control system gives easy operation performance and totally meets the precise grading requirement.  
 •Optimal design is applied on the control levers, which can effectively relieve the operation fatigue and improve the efficiency.

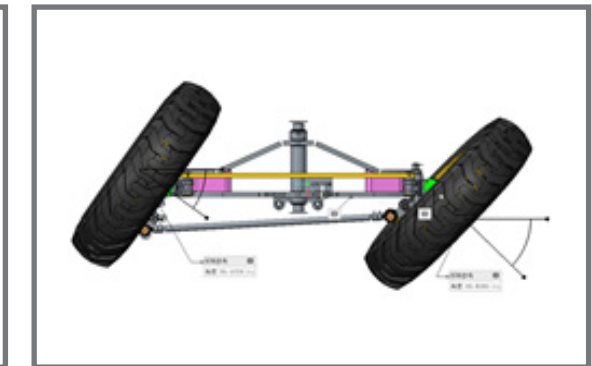
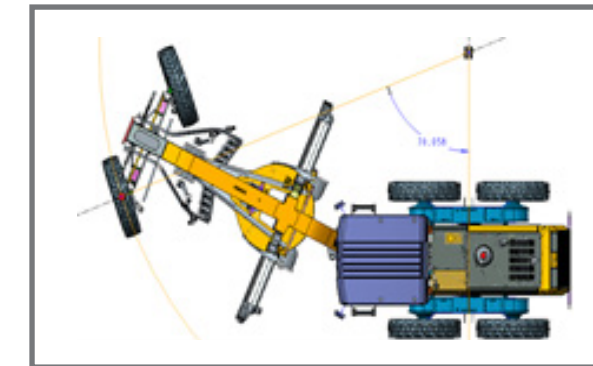
**OUTSTANDING VISIBILITY AND ERGONOMICS CONSOLE**

•FORS & ROPS cab ensures the operation safety and excellent visibility  
 •Ergonomic console provides reliable and comfortable operation experience.



**GREAT MANEUVERABILITY**

•Short wheelbase and aggressive steering angle achieves the excellent turning radius, which has better performance in narrow working condition.



**OPTIONAL EQUIPMENTS**

- ROPS/FOPS Canopy
- Mid-mounted scarifier
- 13ft Blade
- 1000kg Counterweight
- Warning light
- Rear camera
- ZF Transmission
- Meritor Drive Axle

