



■ Packing List

No.	Name	Shape	L(m)	B(m)	H(m)	Unit weight (t)	Qty.
11	Basic section		10.00	2.00	1.95	7.00	1
12	Mast section		3.75	2.00	1.95	2.96	8
13	Luffing assembly		2.61	1.73	1.49	SANY TOWER CRANE SLT260(T5531-18) 3.66	1
14	Hoisting mechanism		1.97	1.95	1.27	3.33	1
15	Climbing frame		9.70	2.51	2.51	8.45	1
16	Cab		2.37	1.33	2.2	0.69	1
17	Strut bar component		2.52	0.81	1.84	0.61	1
18	lampstand assembly		2.12	1.76	1.67	1.31	1
19	Upper bearer frame		2.91	1.73	4.7	4.27	1
20	lower stay		2.26	0.97	2.26	3.22	1



Hunan SANY Tower Crane Co., Ltd.

No.168, Jinzhou Avenue, Jinzhou Development Zone, Changsha, Hunan, China  
Postcode: 410600  
Service: 0086-400 6098 318 Consulting: 400 8879 318  
Email: crd@sany.com.cn

Reminder:

For safe and reliable operation of the diesel engines, please fill Grade IV machines with Grade IV diesel and urea solution conforming to related national standards. Please refer to the operating instructions and related standards for details.

Any change in the technical parameters and configuration due to advancement in technology may occur without prior notice. The machine in the figures may include auxiliary equipment. This brochure is for reference only, and goods in kind shall prevail.  
Copyright at Sany Heavy Industry. No part of this catalogue may be copied, recorded or used for any purpose without written approval from Sany Heavy Industry.

© Printed in February 2020 in China

[www.sanyglobal.com](http://www.sanyglobal.com)

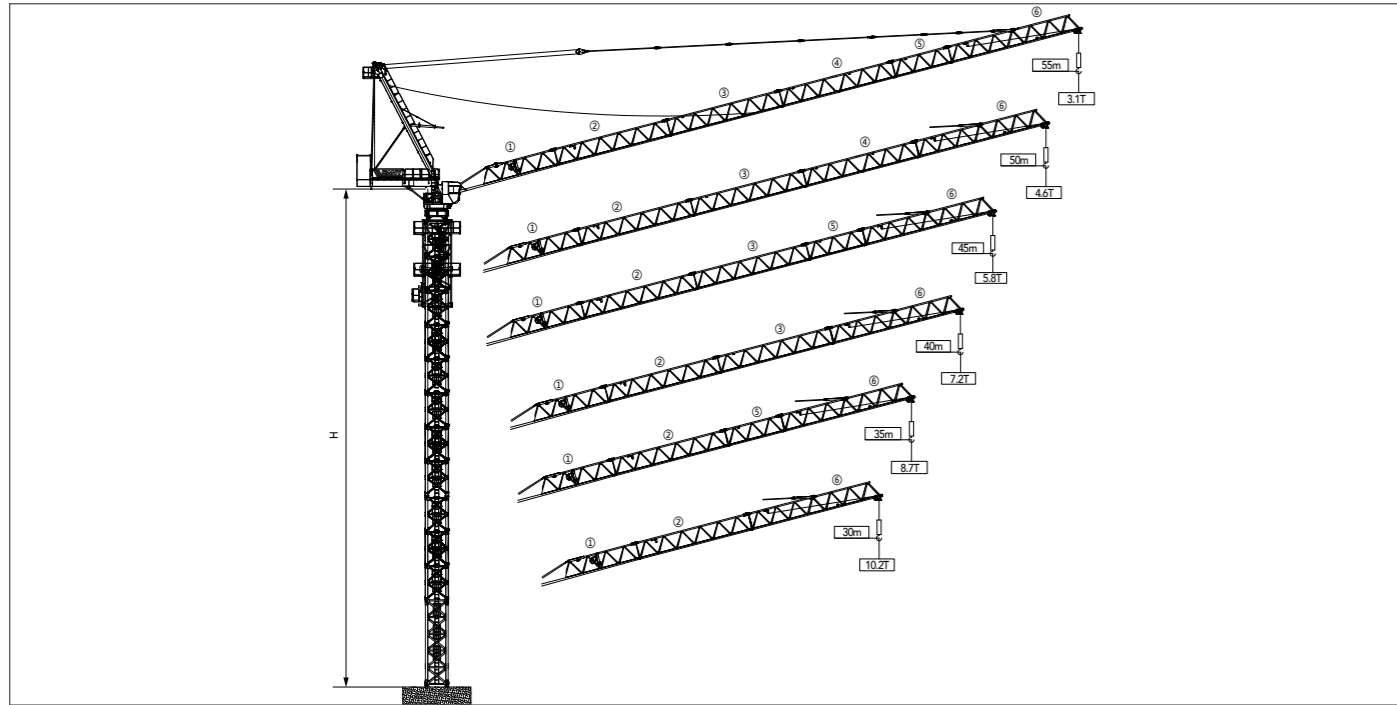


SLT260(T5531-18)

SANY TOWER CRANE

QUALITY CHANGES THE WORLD

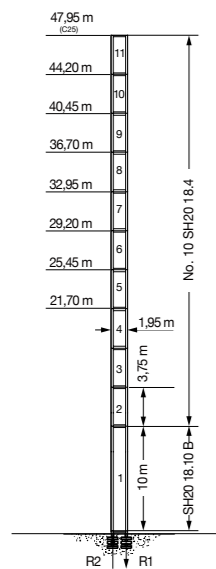
### Jib Length & Tip Load



### Counter-jib Ballast

Jib length (m)	Jib tip load (t)	5t counterweight (blocks)	5t counterweight (blocks)	2t counterweight (blocks)	Total weight of counterweight(t)
55	3.10	1	4	1	27
50	4.60	1	4	0	25
45	5.80	1	4	0	25
40	7.20	1	4	0	25
35	8.70	1	3	1	22
30	10.20	1	3	1	22

### Masts



#### SH20

Jib length (m)	H(m)
30m	47.95
35m	47.95
40m	47.95
45m	44.2
50m	40.45
55m	40.45

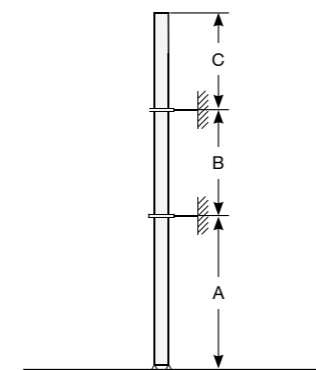
### Load diagrams

Range	Max. lifting capacity	15m	20m	25m	30m	35m	40m	45m	50m	55m	
55m	⌋	5-27.9m /9t	9.00	9.00	9.00	8.12	6.54	5.36	4.44	3.70	3.10
	⌋⌋	5-20.4m/13.5t	13.50	13.50	10.45	8.14	6.50	5.26	4.30	3.53	2.90
50m	⌋	4.6-31.9m/9t	9.00	9.00	9.00	9.00	7.92	6.54	5.46	4.60	
	⌋⌋	4.6-22.6m/13.5t	13.50	13.50	11.91	9.34	7.50	6.13	5.05	4.20	
45m	⌋	4.2-32.8m/9t	9.00	9.00	9.00	9.00	8.28	6.88	5.80		
	⌋⌋	4.2-23.2m/13.5t	13.50	13.50	12.30	9.71	7.86	6.48	5.40		
40m	⌋	3.7-33.7m/9t	9.00	9.00	9.00	9.00	8.60	7.20			
	⌋⌋	3.7-23.7m/13.5t	13.50	13.50	12.64	10.04	8.19	6.80			
35m	⌋	3.3-34m/9t	9.00	9.00	9.00	9.00	8.70				
	⌋⌋	3.3-23.8m/13.5t	13.50	13.50	12.70	10.13	8.30				
30m	⌋	2.8-30m/9t	9.00	9.00	9.00	9.00					
	⌋⌋	2.8-23.9m/13.5t	13.50	13.50	12.77	10.20					
	⌋⌋	2.8-18.7m/18t	18.00	16.63	12.77	10.20					

### Mechanisms

	Model	Power	Velocity
Slewing	SHJ120A7.5TP / SHJ120A7.5TPF	2×11KW	0~0.8r/min
Luffing	OKLBW16A	55kW	≤2.5min
Hoisting	OKQSW180B	67kW	0~110m/min
Hoisting drum capacity	605m	Electric capacity	180kVA
Power voltage	380V(±10%)	Power frequency	50Hz/60Hz

### Anchorage



#### SH20

Jib length (m)	A(m)	B(m)	C(m)
30m	25/35	18/26	29
35m	25/35	18/26	29
40m	25/35	18/26	29
45m	25/32	18/22	27
50m	25/32	18/22	27
55m	25/28	18/22	25

### Packing List

No.	Name	Shape	L(m)	B(m)	H(m)	Unit weight (t)	Qty.
1	boom sectionI		10.56	1.76	1.86	1.61	1
2	boom sectionII		10.51	1.73	1.7	1.21	1
3	boom sectionIII		10.51	1.73	1.7	1.07	1
4	boom sectionIV		10.51	1.73	1.7	1.03	1
5	boom sectionV		5.34	1.73	1.7	0.57	1
6	boom sectionVI		10.57	1.73	2.61	1.59	1
7	A Bracket		11.95	1.85	1.26	4.05	1
8	Balance arm		8.33	3.7	3.64	6.25	1
9	Pulley block		1.77	1.43	0.78	1.1	1
10	Hook		1.2	0.41	2.43	0.68	1