



QUALITY
CHANGES
THE
WORLD

SANY

QUALITY CHANGES THE WORLD

QUALITY CHANGES THE WORLD



**SANY TOWER CRANE
SYT80 (T6013-6)**

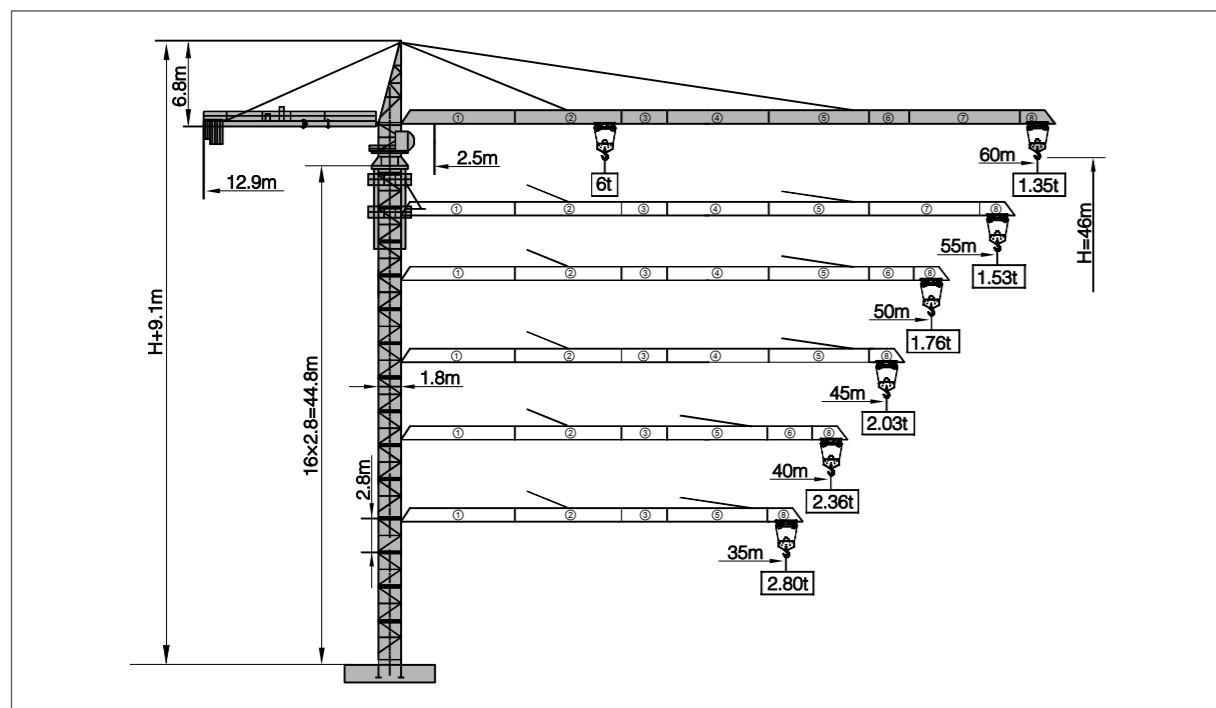
SANY HEAVY INDUSTRY CO.,LTD.

Address: SANY Industrial Park, Economic and Technological Development Zone,
Changsha, Hunan, China.
Service Hotline: +0086-4006-098-318
Email: crd@sany.com.cn
For more information, please visit: www.sanygroup.com

For our consistent improvement in technology, specifications may change without notice.
The machines illustrated may show optional equipment which can be supplied at additional cost.

Distributed By:

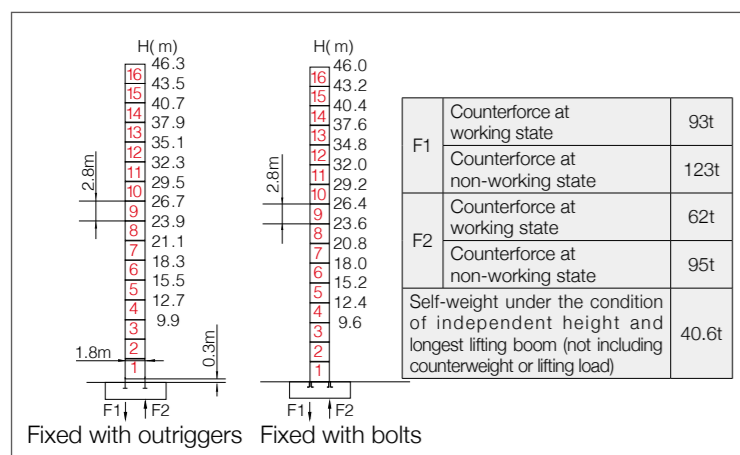
Jib Length & Tip Load



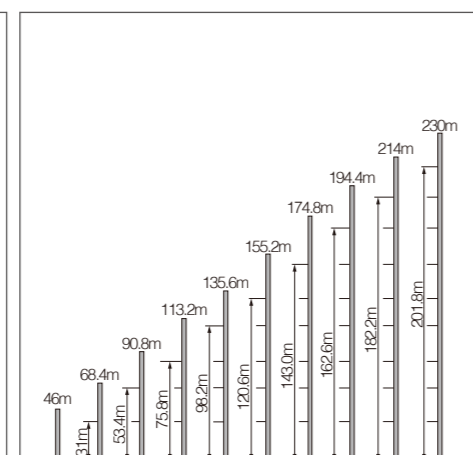
Counter-jib Ballast

Boom length (m)	Balance jib length(m)	Total weight of counterweight (kg)	2660kg counterweight (blocks)	1500kg counterweight (blocks)
60	12.9	17460	6	1
55	12.9	16300	5	2
50	12.9	14800	5	1
45	12.9	13300	5	0
40	12.9	10980	3	2
35	12.9	9820	2	3

Masts



Anchorage

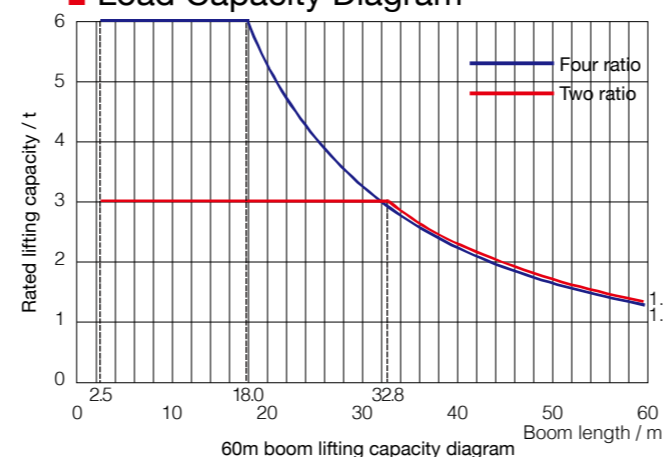


Load diagrams

Range	Max. lifting capacity	18	20	22	25	28	30	32	35	38
60m	2.5~32.8m/3t				3.00				2.77	2.50
	2.5~18.0m/6t	6.00	5.32	4.76	4.09	3.57	3.28	3.03	2.71	2.44
55m	2.5~32.9m/3t				3.00				2.78	2.51
	2.5~18.1m/6t	6.00	5.34	4.78	4.10	3.58	3.29	3.04	2.71	2.44
50m	2.5~33.0m/3t				3.00				2.79	2.51
	2.5~18.1m/6t	6.00	5.35	4.79	4.11	3.59	3.30	3.04	2.72	2.44
45m	2.5~33.0m/3t				3.00				2.79	2.52
	2.5~18.2m/6t	6.00	5.36	4.80	4.12	3.59	3.30	3.05	2.72	2.45
40m	2.5~33.0m/3t				3.00				2.79	2.52
	2.5~18.2m/6t	6.00	5.36	4.80	4.12	3.59	3.30	3.05	2.72	2.45
35m	2.5~33.1m/3t				3.00				2.80	
	2.5~18.2m/6t	6.00	5.38	4.81	4.13	3.60	3.31	3.05	2.73	

Range	Max. lifting capacity	40	42	45	48	50	52	55	58	60
60m	2.5~32.8m/3t	2.34	2.20	2.01	1.84	1.74	1.65	1.53	1.42	1.35
	2.5~18.0m/6t	2.28	2.14	1.95	1.78	1.68	1.59	1.47	1.36	1.29
55m	2.5~32.9m/3t	2.35	2.21	2.02	1.85	1.75	1.66	1.53		
	2.5~18.1m/6t	2.28	2.14	1.95	1.78	1.68	1.59	1.46		
50m	2.5~33.0m/3t	2.36	2.21	2.02	1.85	1.76				
	2.5~18.1m/6t	2.29	2.14	1.95	1.78	1.69				
45m	2.5~33.0m/3t	2.36	2.22	2.03						
	2.5~18.2m/6t	2.29	2.15	1.96						
40m	2.5~33.0m/3t	2.36								
	2.5~18.2m/6t	2.29								

Load Capacity Diagram



Mechanisms

		Model	Power	Speed
Slewing	↻	SHJ100A	2x5.5kW	0~0.75r/min
Trolleying	↔	SXJ33.62B	3.3/2.2kW	50/25m/min
Lifting	↑↓	SQJ03N	24/24/5.4kW	1.5t 80m/min
				3t 40m/min
				3t 8.8m/min
				6t 40m/min
				6t 20m/min
Power voltage		380V(±10%)	Power frequency	50Hz

Note: If working rope capacity is greater than 380m, please contact the manufacturer.

Packing List

No.	Name	Shape	L(m)	B(m)	H(m)	Weight of single piece (t)	Qty.
1	Boom section I		10.19	1.45	1.36	1.40	1
2	Boom section II		10.19	1.32	1.30	0.97	1
3	Boom section III		5.19	1.32	1.30	0.43	1
4	Boom section IV		10.19	1.32	1.30	0.80	1
5	Boom section V		10.19	1.32	1.30	0.69	1
6	Boom section VI		5.19	1.32	1.30	0.38	1
7	Boom section VII		10.19	1.32	1.30	0.63	1
8	Boom section VIII		0.82	1.45	1.46	0.10	1
9	Tower cap		9.53	1.42	1.90	2.76	1
10	Hook		0.92	0.22	1.09	0.24	1
11	Climbing frame		6.63	2.46	2.34	3.42	1
12	Slewing assembly		2.39	2.39	2.10	4.14	1
13	Loading dolly		1.30	1.56	0.68	0.29	1
14	Rear boom section of balance boom		6.19	1.38	0.61	0.82	1
15	Front boom section of balance boom		6.29	1.38	0.58	0.86	1
16	Full set of cab		1.85	1.20	2.20	0.40	1
17	Basic section		2.83	2.12	2.12	1.15	1
18	Standard section		2.80	1.96	1.96	0.93	12
19	Fortified section		2.80	1.96	1.96	0.98	3