

○ Standard configuration

Engine

- Starting motor
- AC motor
- Air filter
- Dual-core air filter
- Cylinder engine oil filter
- Cylinder fuel oil filter
- Engine oily water cooler
- Radiator with protective screening
- Auxiliary water tank of radiator
- Fan wind scooper
- Display of fuel oil level

Hydraulic system

- Mechanical operating type
- Control valve with main overflow valve
- Double-pipeline hydraulic crane brake
- Air filter
- Return oil filter
- Brake filter
- Viewing port of hydraulic oil level

Instrument of monitoring system

- Oil level display of fuel tank
- EEVIA mobile APP
- Function setting
- Fault information
- System setting
- Maintenance information
- Information of various systems
- Mobile password setting

Cab

- Sound-proof steel structure cab
- Reinforced light-colored glass window
- Four supports of silicone oil rubber damper
- Openable right-side window
- Emergency exit of right door
- Windscreen wiper with cleaner
- Adjustable reclining seat with adjustable handrail
- AM-FM radio with digital clock
- Floor mat
- Loudspeaker and rearview mirror
- Fire extinguisher
- Drinking cup holder and interior lamp
- Ashtray and escape hammer
- Storage box and sundry bag
- Cold and warm air conditioning
- Sun shade

Working device

- Flange pin
- Welded connecting rod
- Lubrication system
- All bucket pins equipped with dustproof seal ring
- Reinforced plate-type movable arm
- Reinforced plate-type rocker arm
- Toothed holder and sleeve wear-resisting dipper teeth

Drive system

- Intermediate support of heavy-duty drive shaft
- Planetary gearbox
- Mechanical gear change
- Split clamp disc crane brake
- Rear drive axle of swinging structure

Alarm display

- Low engine oil pressure and overheating of motor cooling fluid
- Battery undervoltage
- Fuel oil shortage
- High oil temperature of gearbox

Others

- Standard battery
- Lockable roof cover
- Portable fuel oil filling cover
- Anti-slip pedal, handrail and sidewalk
- Tool kit



Wheel Loader

SW955K1

Comprehensive Subversion BRAND NEW K1

EFFICIENT AND VALUE ADDING

Innovation-Oriented and Wonderful SANY



Shanghai SANY Heavy Machinery Co., Ltd. Shanghai SANY Heavy Machinery Industry Park,
Ping'an Town, Fengxian District, Shanghai City, China

○ Postal code: 201413 ○ After-sales service hotline: 4008282318 ○ Consultation and complaint hotline: 4008879318 ○ www.sany.com.cn

Note

It is a sample and only for reference. All configurations are subject to contract and material object. We will make modification without prior notice.

CHINA PRINT
No.: ZJSYX0604CH (March 2016)

**Efficient and
Powerful
Economical
and Intelligent**

Selling Points

SW955K1 is a long-wheelbase 5.5 T all-purpose loader that SANY develops to improve customer's investment return. It is efficient, oil-saving, powerful and intelligent compared with the competitive brands.

New Generation of All-Purpose Loader

**Efficient
and
Powerful**

**Intelligent
and
Comfortable**

**Energy-Saving
and
Economical**

**Safe and
Reliable**





Engine

Weichai Engine

Matched with SANY's product, it is an efficient electrically controlled high-voltage common-rail motor with large horsepower and displacement especially customized for SANY.

Powerful and more economical; low-speed large torque and four-throttle valve structure; high intake efficiency, sufficient burning and excellent good performance. Quiet, reliable and more comfortable; direct injection in cylinder improves burning state and effectively lowers engine oil consumption, vibration and noise; the dual-curved surface plastic fan enhances heat emission efficiency and effectively lowers engine's radiation noise level, making drive more comfortable and secure. Convenient maintenance and wide application: Meet national III emission requirements. The three-level fuel filter contributes to good oil adaptability and improves reliability.



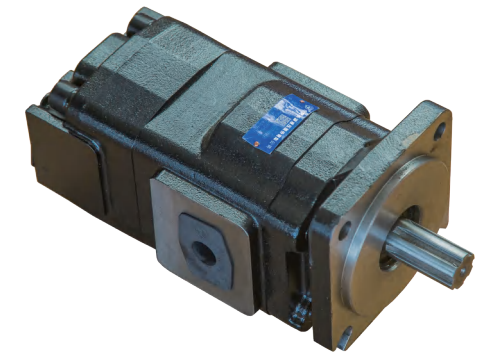
ENGINE

Hydraulic system

Efficient quantitative 3-pump combined hydraulic system

The domestically leading quantitative 3-pump combined hydraulic system contributes to the best matching between speed and power and more efficient, rapid and energy-saving operation.

- Domestic mainstream 18 MPa hydraulic system have longer service life of hydraulic elements.
- 3-pump combined work style develops larger total displacement of pump, effectively improves working device and speed and makes stockpiling and truck loading faster.
- 3-pump combined work style ensures allocation according to needs; more flexible steering in narrow space; easier steering when engine is at a low speed and not floating when it is at a high speed.



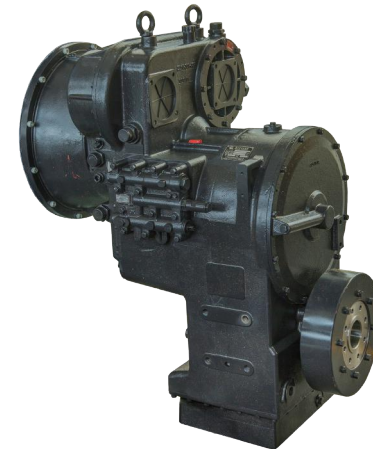
HYDRAULIC SYSTEM

Gearbox

60 planetary gearbox

The planetary multi-switching gearbox particularly customized for SANY loader is adopted. Integration of dual turbine four-element hydraulic torque converters; gear switching controlled by machine liquid.

- Excellent operability and adaptive modulation function improve working efficiency greatly.
- Integration of dual turbine hydraulic torque converters contributes to the higher transmission efficiency.
- Gear switching by machine liquid valve develops the smoother gear switching and faster response.

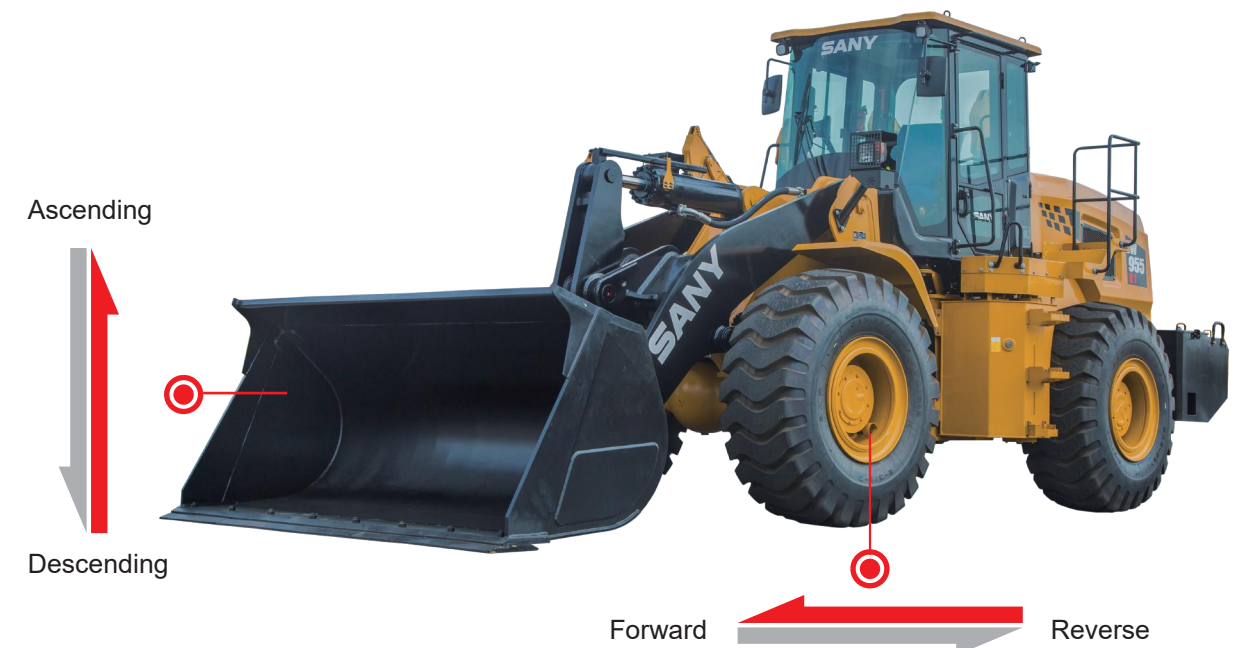


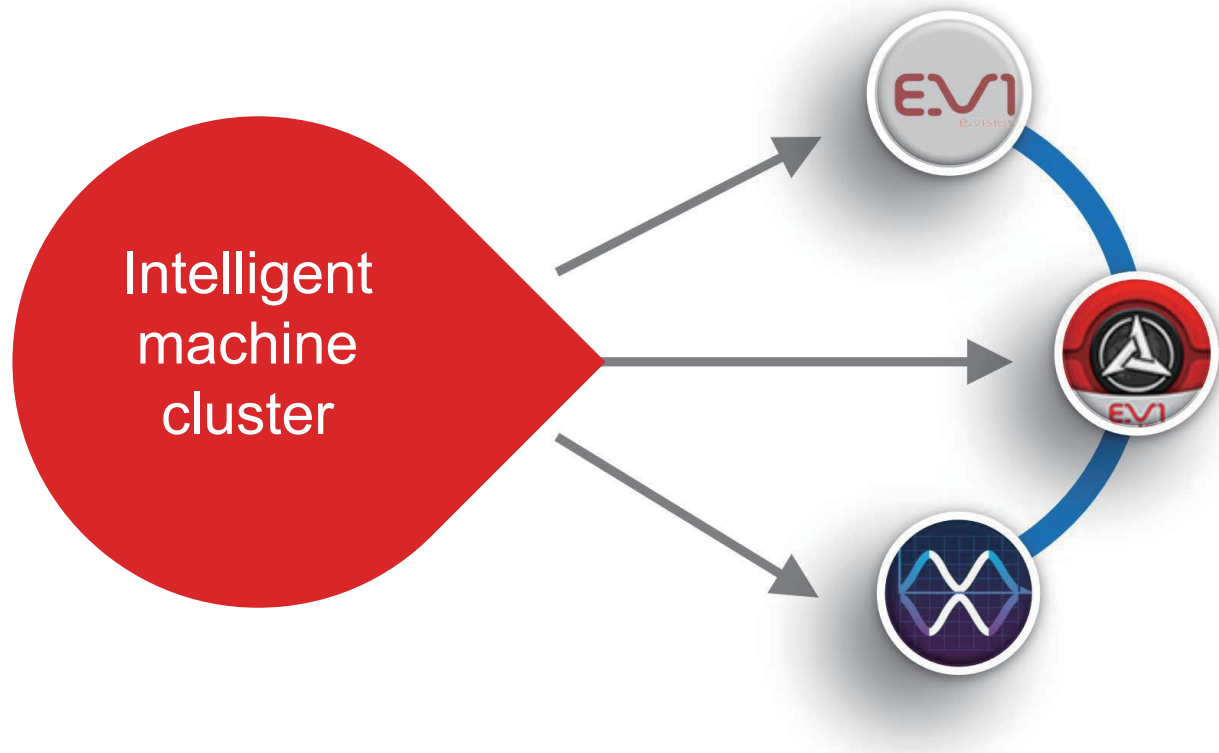
GEARBOX

Innovation matching

Optimal system matching

Optimal speed and power are realized with innovation and matching of power, transmission and hydraulic pressure and application of the core parts of domestic famous brands (e.g. Weichai and Hangzhou Advance).





EVision ECI-Cloud
 Cloud machine cluster management system of loader

- Machine cluster distribution
- Construction statistics
- Remote service

EVision EVI-APP:
 Customer equipment management system of loader

- Real-time mastery of equipment working condition
- One-key service call
- Visual service process
- Community forum
- Construction thermodynamic diagram



Intelligent display screen:

- 640* 480 resolution 5" color LCD
- GPRS networking and GPS positioning
- Real-time operating system and control speed < 1 ms
- IP65 protection grade; applicable to severe working condition



"Yi Yan" APP:
 Site service diagnosis system of loader

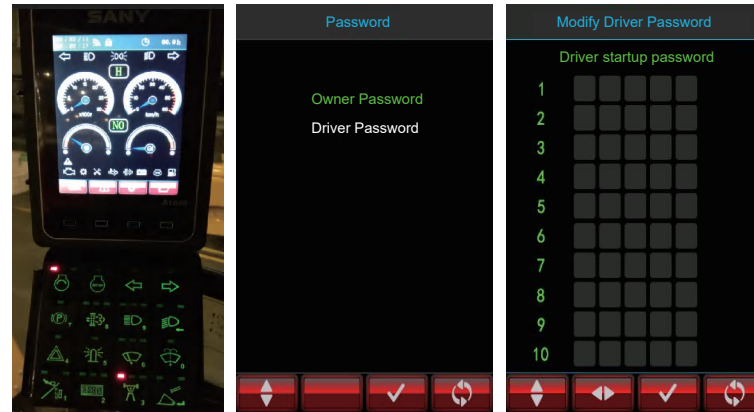
- Wireless screen projection
- Fault diagnosis
- Wireless regulation and program refreshing

One-key startup and secret key management

CAN communications intelligent startup management system

Domestically first management system of intelligent secret key startup and engine startup and shutdown; easy to start up and shut down; extending service life of starting motor and battery

- One-key startup ensures engine startup is impact-free and in time; effectively overheating of starting motor and over-discharge of battery.
- Intelligent secret key management, customization of vehicle owner password; 10 mobile passwords are distributed by vehicle owner and equipment is safer.



Intelligent power supply management and automatic fault diagnosis

CAN communications intelligent power supply management and fault diagnosis system

The domestic first bus communications control power supply management system, realizing overload protection and multi-mode automatic fault recognition and alarm.

- Intelligent power supply management module is designed with contactless relay; with overload and short circuit protection, it has service life improving by 100 times.
- Diagram + text fault diagnosis; fault information prompt is more direct and accurate; troubleshooting is convenient and fast.
- Intelligent contactless multi-functional key panel has one key for multiple purposes and is featured by more comfortable operation, very simple wiring and more reliable application.



Cab

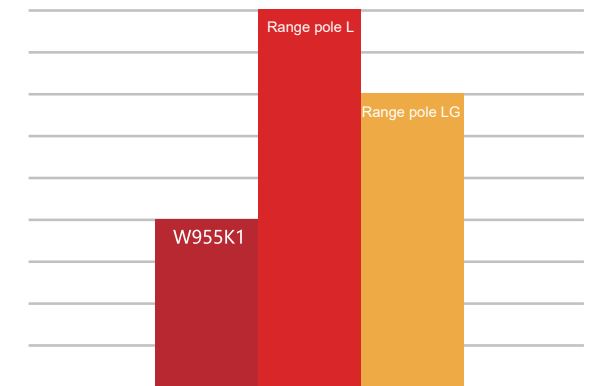
Ultra-large space and ultra-low noise

Panoramic ultra-silent cab and ultra-large space and view

- Compared with domestic vehicle, interior space expansion of cab is above 15%.
- Excellent seal performance; noise and dust-free; noise level is 79 dB(A) only.



Panoramic cab



Cab noise beside ears

More personalized drive experience

The panoramic cab meeting human engineering is more comfortable.

- Cooling and heating air conditioning



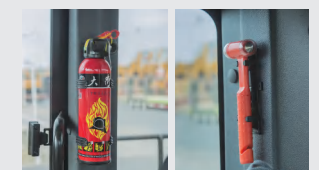
- 9-dimension adjustable floating seat
Ultra-large front and rear adjustment space
Backrest can be adjusted to the greatest extent.
- Automatically retractile safety belt device



- Automatically retractile safety belt device
- Pedal layout with optimal operating comfort
- Pedal layout with optimal operating comfort



- Safety hammer
- Fire extinguisher

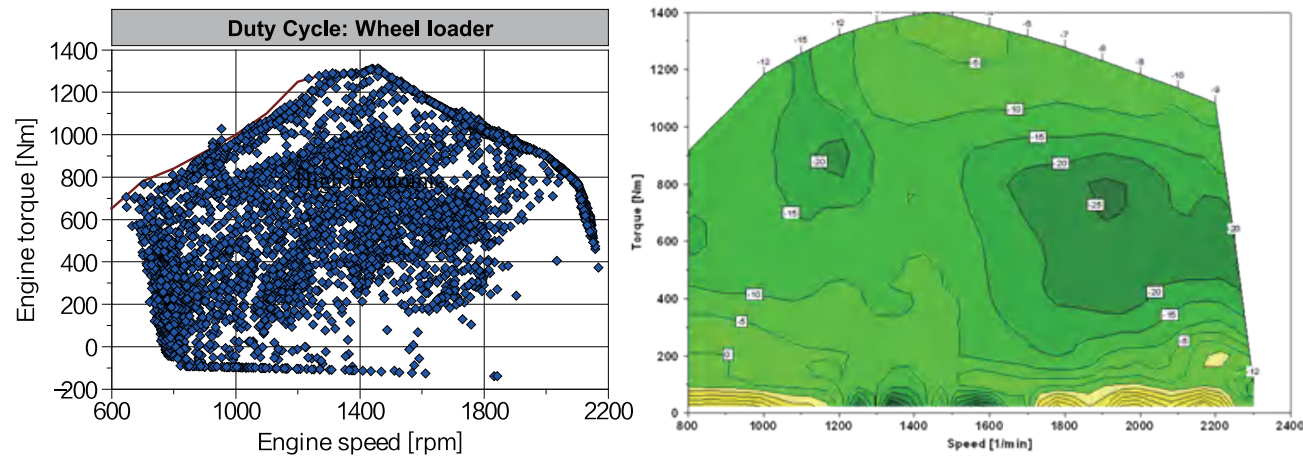


Complete machine control and matching

Lower fuel consumption

More than 15% comprehensive energy consumption can be saved by optimizing complete machine control and matching.

- Complete machine is designed with CANBUS bus communications – SANY’s original MAT multi-mode automatic control system.
- The best matching between power and speed is realized through collaboration of engine, gearbox and hydraulic system.
- High consistency of load spectrum ion actual working condition with engine torque and oil consumption ranges develops larger strength, higher efficiency and lower oil consumption of complete machine and realizes the excellent combination of efficiency and energy consumption.

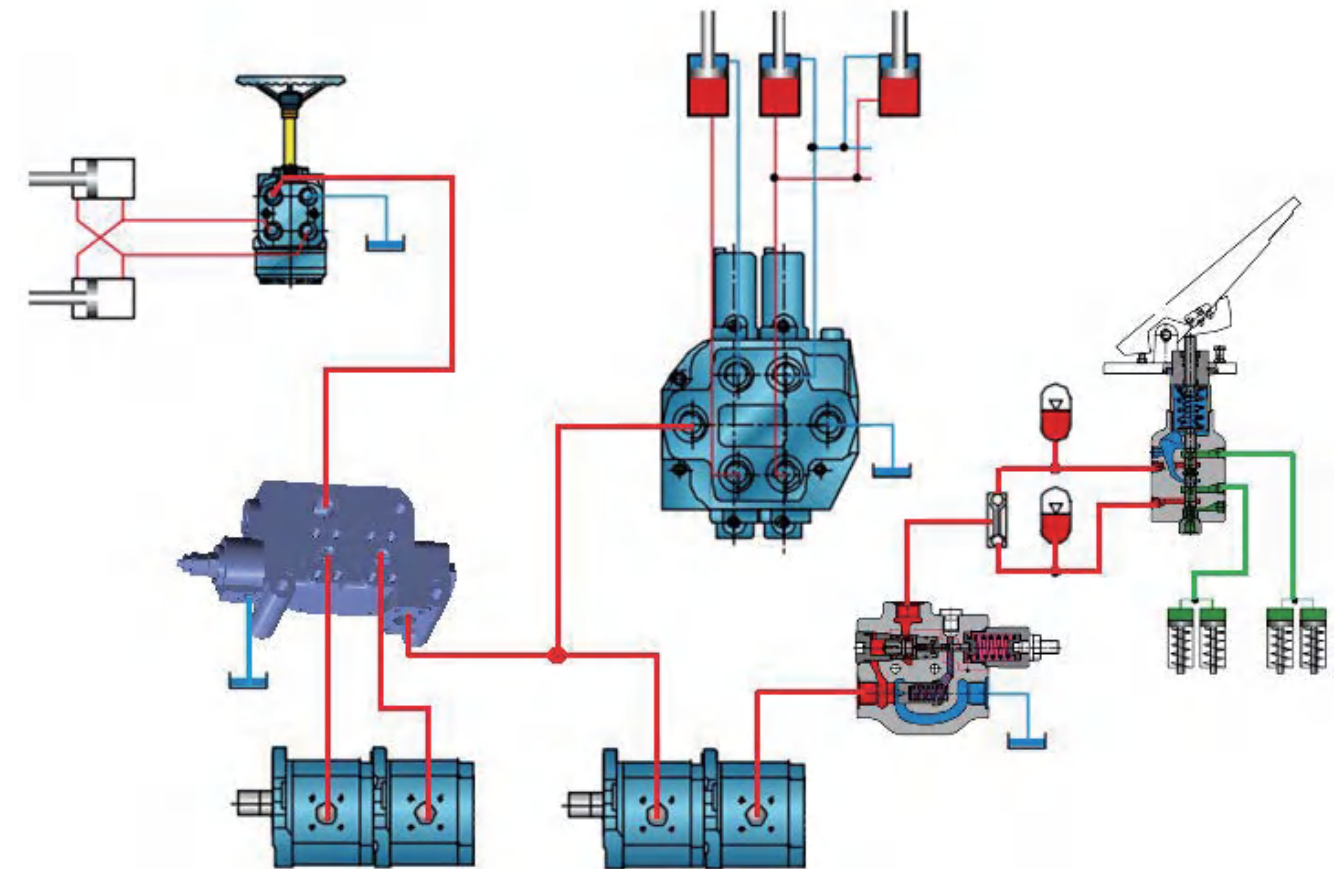


Hydraulic system

Energy-saving and efficiency 3-pump combined hydraulic system

The 3-pump combined hydraulic system, together with hydraulic parts of famous brands, ensures the flow distinction according to needs and lowers the unnecessary energy loss. The energy-saving effect is above 10%.

- Matched with efficient gear pump, it has longer service life and steadier performance.
- 3-pump combined ensures the flow distribution according to needs and lowers energy loss.
- The optimized pipeline layout reduces the energy consumption resulted from pressure loss.



Lower cost

Efficient and energy-saving hydraulic system with 3-pump combined

Through power matching and optimization, transmission and hydraulic system of SW955K1 improves speed and power, lowers fuel consumption and realizes higher fuel economy. According to the contrast test under the identical working condition, the working efficiency is improved by more than 10% and comprehensive oil consumption is lower by 15%.



Lower oil consumption



Enhance power



High Reliability

Weichai in-cylinder direct injection engine

The high-pressure common-rail 9.7 large-displacement and large-horsepower direct injection engine is designed advanced technology and reliable performance.

- The leading in-cylinder burning technology improves reliability and durability dramatically.
- The mature electric control intelligent technology improves overall performance of engine: Stronger self-diagnosis and protection abilities.
- Three-level fuel filter enjoys stronger environment and fuel adaptability and meets requirements of national III emission.



Braking system

Safe and reliable braking system

The dual-pipeline fully hydraulic crane braking system is controllable and reliable and makes driver safer and secure.

- With closed system, braking hydraulic oil is less likely to be contaminated by the external environment, service life of braking components and elements is longer and fault rate is lower.
- The independent hydraulic braking circuits of front and rear axles guarantee the reliable crane braking.
- Hydraulic system is subject to the Grade 9 fine oil standard and high-pressure pipeline design standard just as excavator, making parts of the whole system operating more durably and reliably.



Gearbox

Hangzhou Advance planetary gearbox

It is a heavy-load 6 t planetary gearbox customized and exclusively designed for SANY.



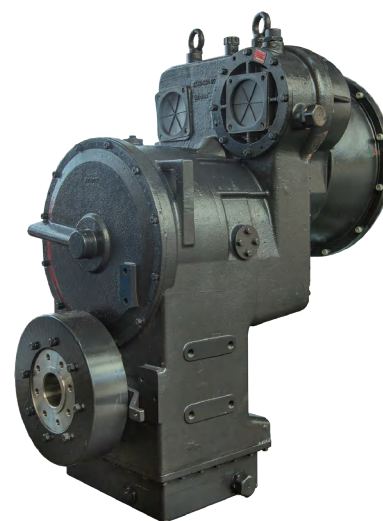
The 6t gearbox improves tractive force dramatically and is a competitive product leading in the industry.



The 8,000 h service life design standard contributes the longer service life.



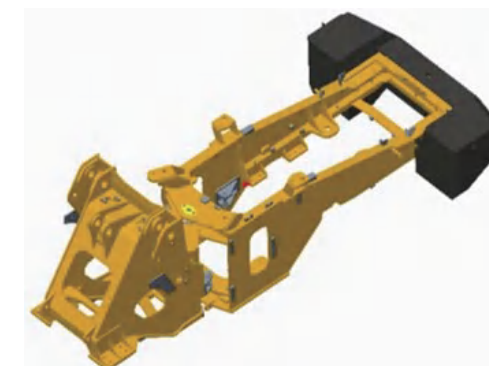
Bearing capacity is improved comprehensively and service life is extended effectively.



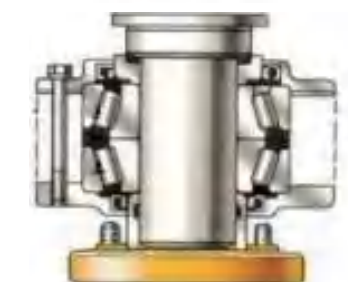
Structure

Heavy-load structural parts with high strength and ultralong service life

- Large-span hinge plate structure design contributes to the high torsion resistance and large bearing capacity.
- Heavy-load middle hinge joint structure – Since equipped with large-spacing up and down hinge joint bearings, it could bear large transverse and longitudinal load, and thus the fault risk under severe condition is lowered.



Large-span frame



Heavy-load hinge joint

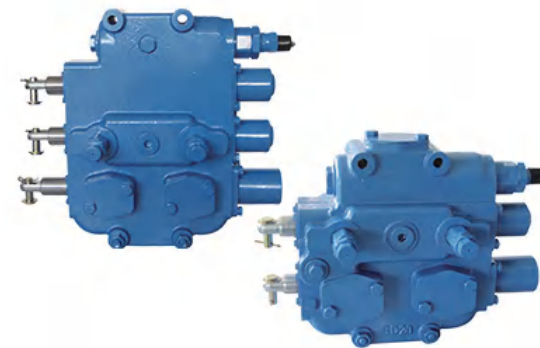


Major Dispositions

Core parts (e.g. engine, gearbox and pump valve) is featured by the joint design and manufactured by famous manufacturer, so as to ensure excellent quality and meet professional requirements of SANY's customer.



Conforming to National III emission standard, **WP10** engine has large displacement torque and strong power and could help customers solve difficulties under heavy load working condition.



GDF -32 main valve enjoys the prominent advantages such as "high reliability, small pressure loss, high flow distribution efficiency and smooth composite actions" and could help customers complete heavy work easily.



ZL60 gearbox is a typical customized gearbox and planetary gearbox with stronger power absorption capacity and longer service life.

Optional Equipment



Logging fork



Oversize bucket (4.0 m3)



Rock head (2.7 m3)



Side dumping bucket

Main parameters

Main performance indicators	SW955K1
Gear 1 advance speed (Km/h)	0~13
Gear 2 advance speed (Km/h)	0~40
Total cycling time (s)	≤ 10.5
Max. bucket break-out force	≥ 175
Max. tractive force (kN)	≥ 175
Max. steering angle (°)	35
Dumping height (mm): 45°dumping angle	3126
Dumping distance (mm): 45°dumping angle	1140
Min. turning radius (tyre outer edge) (mm)	6495
Full-steering tipping load (kg)	11600
Linear tipping load (kg)	13200



Technical specifications

Engine		Steering system	
Weichai	WP10G220E343	Hinged frame, dual-valve combination, sensitive negative load, coaxial flow amplification and steering preference.	
	In-line 6-cylinder, 4-valve, turbocharging and direct injection		
Rated power/speed	162kW@2000r/min	Gear pump	Gear pump
Number of cylinders × cylinder diameter × stroke	6 × 126mm × 130mm	Flow/speed	103L/min@2000r/min
Max. torque	980Nm	Steering angle	± 35°

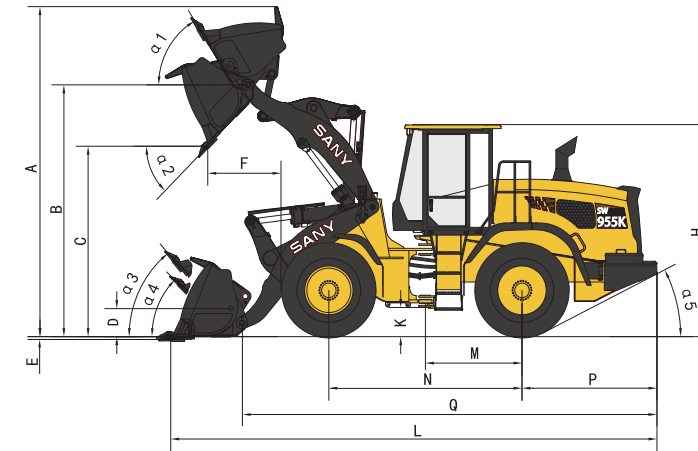
Hydraulic system		Braking system	
3-valve combined hydraulic system. Internal pressure oil tank avoids external pollution totally		Service brake	The four-wheel is provided with full hydraulic caliper disc brake
Working pump	Gear pump	Emergency/parking braking	Mechanical flexible shaft drum brake
Flow/speed	80L/min@2000r/min		
Total cycling time (s)	≤ 10.5		

Volume data		Bucket control device	
Fuel tank	300L	Ascending/descending	Mechanical joystick and pilot joystick: Ascending, maintenance, descending and floating
Cooling system	45L	Bucket folding/unfolding	Mechanical joystick and pilot joystick: Bucket unfolding, maintenance and folding
Gearbox system of torque converter	45L		
Hydraulic oil tank	220L		
Front drive axle oil	26.2L		
Rear drive axle oil	26.2L		

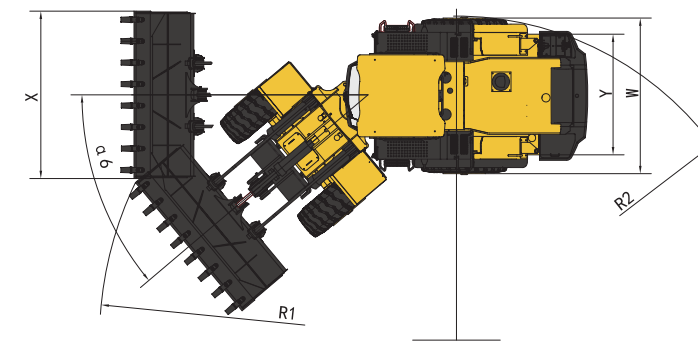
Drive system			Drive axle and tyre	
Torque converter & gearbox	Planetary mechanical gear shift gearbox of Hangzhou Advance Gearbox Group Co., Ltd.		Type	Four-wheel drive
Driving speed (km/h)	Gear	Speed	Tyre	23.5-25
	Forward I	13	Layer	16
	Forward II	40	Tyre pressure	Front wheel: 0.39Mpa, Rear wheel: 0.3Mpa
	Retreat I	17		

Optional equipment	
Extension jib and ultra-long jib	
Rock bucket, oversize bucket and heavy load bucket	
Logging, fork and side pumping bucket	

Machine dimensions (mm)



Items (mm)	SW955K1	
A	Max. lifting height	5235 ± 50
B	Height of hinged shaft at max. ascending status	4080 ± 50
C	Unloading height	3126 ± 50
D	Transport height	450
E	Digging depth	30
F	Unloading distance	1140 ± 50
H	Overall height	3560 ± 50
K	Ground clearance	410 ± 10
L	Overall length (with bucket)	8152 ± 50
M	Distance from hinged center to rear wheel center	1600
N	Axle base	3200
P	Rear overhang distance	2145 ± 50



Items (mm)	SW955K1	
Q	Distance from balancer to bucket hinge axle (mm)	6700 ± 50
α 1	Bucket unfolding angle at max. height	60°
α 2	Discharging angle	45°
α 3	Bucket unfolding angle at transport position	49°
α 4	Bucket unfolding angle on ground	45°
α 5	Departure angle	28°
α 6	Max. steering angle	± 35°
W	Overall width (outer side of wheel) (mm)	2795 ± 50
X	Tread	2200
Y	Bucket width	3000
R1	Turning radius (outer side of bucket) (mm)	7145 ± 50
R2	Min. turning radius (outer side of wheel) (mm)	6495 ± 50

Full new generation of versatile wheel loader

**Efficient, Strong,
Economic and
Intelligent**

